

SECTION 11110

FLATWORK IRONER 13" DIAMETER HEATED ROLL / 63" FINISHING LENGTH

PART 1 GENERAL

1.01 SECTION INCLUDES:

- A. Flatwork ironer for processing linen items

1.02 SYSTEM DESCRIPTION

A. DESIGN REQUIREMENTS:

- 1. Construction: Fully Enclosed, Painted Steel Cabinet With Removable Front and Rear Painted Steel Panels. Includes Return Trough and Removable Napkin Tray
- 2. Input Voltage: 120/60/1
- 3. Heat Source: Natural Gas, 3/4 inch (19 mm) NPT
- 4. Roll Diameter: 13 inches (330 mm) minimum
- 5. Finishing Width: 63 inches (1600 mm) minimum
- 6. Overall Width: 86 inches (2192 mm) nominal
- 7. Overall Depth: 26 inches (660 mm) nominal
- 8. Overall Height: 44 inches (1112 mm) nominal
- 9. Exhaust Number and Size: 2 Exhausts @ 4 inches (102 mm)
- 10. Control System: Microprocessor Control
- 11. Type of Ironer: Heated Roll (Polished Steel Cylinder)
- 12. Feed Ribbons: NOMEX®. Single Piece, Clipless Construction
- 13. Return Ribbons: NOMEX® Construction With Covered Staple Seams
- 14. Safety Features
 - a. Finger guard to prevent injury in case of operator error
 - b. Emergency stop button

B. PERFORMANCE REQUIREMENTS:

- 1. BTU Input: 76,800 BTU
- 2. Roll Motor Horsepower: 1/3 hp (.25 kW)
- 3. Exhaust Motor Horsepower: 1/7 hp (.12 kW)
- 4. Control System
 - a. Variable speed inverter drive system
 - b. Variable temperature settings from 176 - 356°F (80 - 180°C)
 - c. Safety overheat protection
 - d. Automatic cool down
- 5. Permanently Lubricated Bearings
- 6. No Wax Heated Roll
- 7. Manual Advance for Linen Removal in Event of a Power Failure

8. Roll Scrapers to Prevent Linen From Wrapping Around the Heated Roll

1.03 DELIVERY, STORAGE & HANDLING

A. ACCEPTANCE AT SITE:

1. Inspect machine for damage prior to acceptance. If damage is found, follow freight handler's procedure for claims.

B. STORAGE & PROTECTION

1. Machine should be stored in a site protected from weather, direct sunlight & temperature extremes. Do not remove packaging prior to storage.
2. If machine is to be stored for an extended period of time, consult manufacturer for special requirements.

1.04 WARRANTY

- A. Warranty Period: Limited one year, parts only, commencing on Date of Substantial completion

1.05 SYSTEM STARTUP & COMMISSIONING

- A. Machine installation should be inspected by local manufacturer's representative prior to startup & operation. The party installing the machine is responsible for setting the schedule for this inspection.

PART 2 PRODUCTS

- A. Source quality
- B. Alliance Laundry Systems LLC - UniMac, obtain commercial laundry equipment from a single manufacturer

1.02 QUALIFIED MODELS

- A. UniMac model **UD13F063G** (no substitutions permitted)

PART 3 EXECUTION

1.01 INSTALLATION

- A. Refer to & comply with manufacturer's installation instructions. Do not deviate without permission from site owner, architect, general contractor & manufacturer's local representative.

UD13F063 Specifications

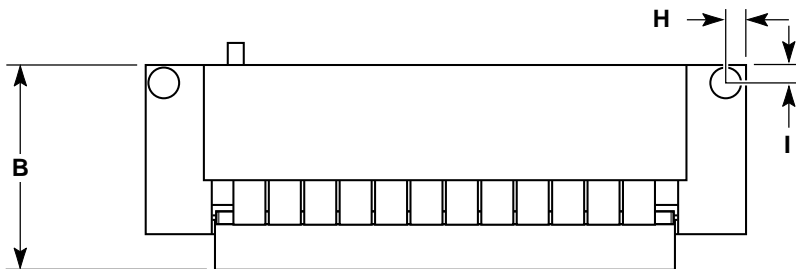
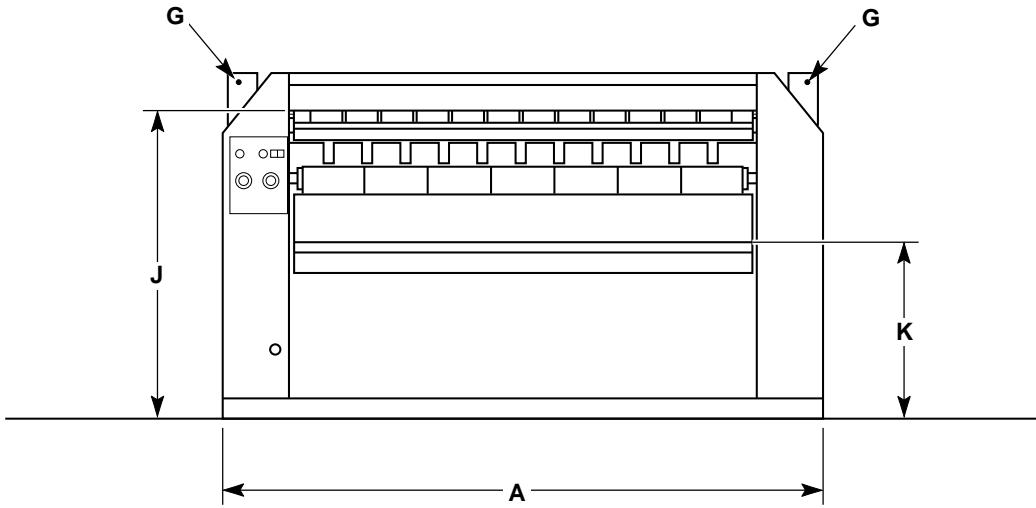
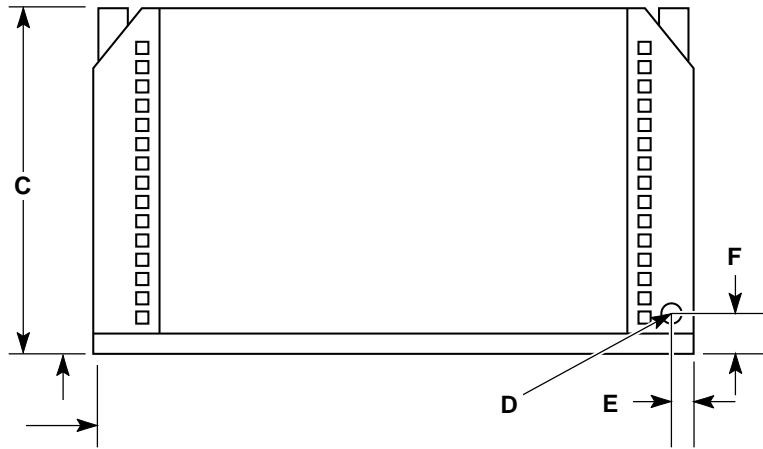
ELECTRICAL REQUIREMENTS

Heat Source	Serial Plate Voltage	Full Load Amps	Breaker Rating	Recommended Number & Wire Size
Gas	120/60/1	4.8	15	3 x 14 AWG
Gas	208-240/60/1	4.8	15	3 x 14 AWG
Gas	230/50/3	4.8	10	4 x 14 AWG
Gas	400/50/3	4.2	10	5 x 14 AWG
Gas	440-480/60/3	Install a 208-240/60/1 model and use a remote transformer		

DIMENSION TABLE

A	B	C	D	E	F	G	H
86 in. (2184 mm)	26 in. (660 mm)	44 in. (1117 mm)	3/4 in. (19 mm)	2-3/4 in. (70 mm)	5-1/4 in. (133 mm)	4 in. (102 mm)	2-1/4 in. (57 mm)
I	J	K					
2-1/4 in. (57 mm)	39 in. (991 mm)	22 in. (559 mm)					

MODEL DIMENSIONS



LEPH2051